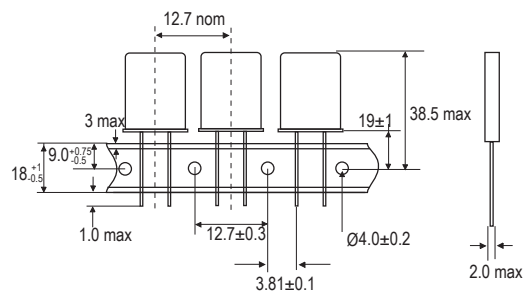
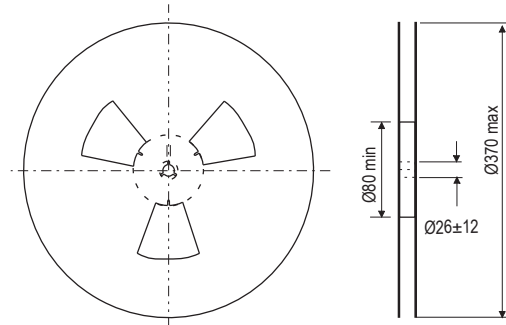


## TAPE AND REEL DETAILS - LEADED

Tape (mm)



Reel (mm)



Cut outs are shown for indication only

### Hold Down Tape

- The hold down tape shall not protrude beyond the carrier tape.
- The components shall be held sufficiently in the tape so that their position remains within the permitted tolerances.

### References

- All dimensions are based on international standard EIA-481-C.