



ISSUE 6; February 2012 - RoHS 2011/65/EU



Description

- PLL based, one time only factory programmable for a fast lead time
- Crystal oscillator in a hermetically sealed ceramic package with a metal lid
- See CFPS-53 for standard crystal oscillator alternative
- See IQMS-533 for MEMS oscillator alternative

Frequency Range

- Frequency 1.00 to 133.00MHz

Supply Voltage

- Voltage 1.8V ±10%

Output Compatibility & Load

- Output Compatibility CMOS
- Drive Capability 15pF max

Frequency Stabilities

- Frequency Stability ±20ppm, ±100ppm

Operating Temperature Ranges

- -40 to 85°C
- -20 to 70°C

Electrical Parameters

- Stand-by current: 15µA max
- Start Up Time: 2ms max

Frequency Stability

- All frequency stabilities are inclusive of tolerance, supply voltage variation, load variation, 1st year ageing, shock and vibration.

Output Control

- Logic '1' (>70%VS) to pad 1 enables oscillator output
- Logic '0' (<30%VS) to pad 1 disables oscillator output; when disabled the oscillator output goes to the high impedance state
- No connection to pad 1 enables oscillator output

Noise Parameter

- Period Jitter: 200ps max

Environmental Parameters

- Storage Temperature Range: -55 to 125°C

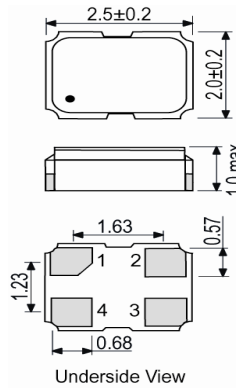
Ordering Information (*minimum required)

- Frequency*
Model*
Output Compatibility
Frequency Stability (over operating temperature range)*
Operating Temperature Range*
Supply Voltage
(*minimum required)
- Example
20.0MHz CFPP-53
CMOS ±50ppm -40 to 85C 1.8V

Packing Details



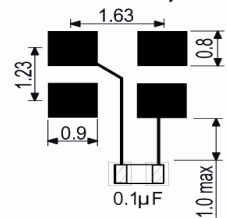
Outline (mm)



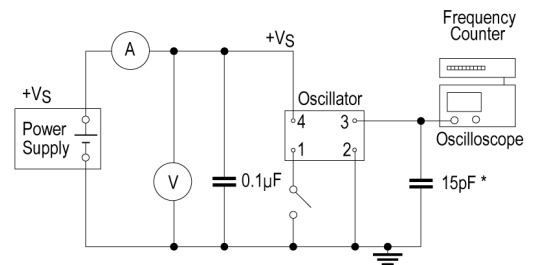
Pad Connections

1. Standby
2. GND
3. Output
4. +Vs

Solder Pad Layout



Test Circuit



* Inclusive of jiggng and equipment capacitance

Sales Office Contact Details:

UK: +44 (0)1460 270200
Germany: +49 (0)7264 9145-0

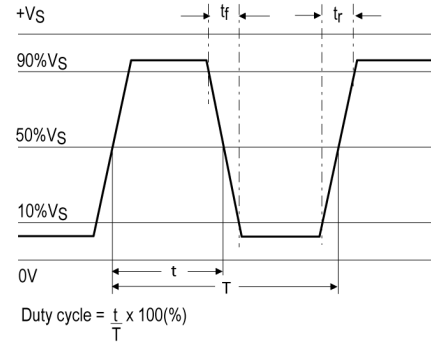
France: Opening 6th March 2012
USA: +1 (0) 650 798 5047

Email: info@iqdfrequencyproducts.com
Web: www.iqdfrequencyproducts.com



- Pack Style: **Bulk** Loose in bulk pack
- Pack Size 1
- Pack Style: **Reel** Tape and reel in accordance with EIA-481-D
- Pack Size 1,000
- Alternative packing options available

Output Waveform



Electrical Specification - maximum limiting values 1.8V ±10%

Frequency Range	Temp Range	Stability		Current Draw	Rise & Fall (10 to 90%)	Duty Cycle %
		Min	Max			
1.00 to <10.00MHz	-20 to 70°C	±20ppm	±100ppm	6.0mA	5ns	45/55%
	-40 to 85°C	±20ppm	±100ppm	6.0mA	5ns	45/55%
10.00 to <30.00MHz	-20 to 70°C	±20ppm	±100ppm	6.0mA	4ns	45/55%
	-40 to 85°C	±20ppm	±100ppm	6.0mA	4ns	45/55%
30.00 to <75.00MHz	-20 to 70°C	±20ppm	±100ppm	8.0mA	4ns	45/55%
	-40 to 85°C	±20ppm	±100ppm	8.0mA	4ns	45/55%
75.00 to <133.00MHz	-20 to 70°C	±20ppm	±100ppm	12.0mA	4ns	45/55%
	-40 to 85°C	±20ppm	±100ppm	12.0mA	4ns	45/55%

This document was correct at the time of printing; please contact your local sales office for the latest version

Sales Office Contact Details:

UK: +44 (0)1460 270200
Germany: +49 (0)7264 9145-0

France: Opening 6th March 2012
USA: +1 (0) 650 798 5047

Email: info@iqdfrequencyproducts.com
Web: www.iqdfrequencyproducts.com