



ISSUE 9; February 2012 - RoHS 2011/65/EU



Description

- PLL based, one time only factory programmable for a fast lead time
- Crystal oscillator in a plastic encapsulated 'J' leaded SMD package

Frequency Range

- Frequency 1.00 to 150.00MHz

Supply Voltage

- Voltage 5.0V ±0.5V

Output Compatibility & Load

- Output Compatibility CMOS

Maximum Capacitive Load	
CMOS <=66.0MHz	50pF
CMOS >66.0 to 150.0MHz	25pF

Frequency Stabilities

- Frequency Stability ±25ppm, ±100ppm

Operating Temperature Ranges

- -40 to 85°C
- 0 to 70°C

Frequency Stability

- All frequency stabilities are inclusive of tolerance, supply voltage & load variations over the operating temperature range.

Output Control

- Tri-state Operation:
Logic '1' to pad 1 enables oscillator output
Logic '0' to pad 1 disables oscillator output; when disabled the oscillator output goes to the higher impedance state
No connection to pad 1 enables oscillator output

Noise Parameter

- Jitter pk-pk (typical):
1 to 33MHz: 100ps
>33MHz: 75ps
- Jitter pk-pk (max):
1 to 33MHz: 250ps
>33MHz: 175ps

Environmental Parameters

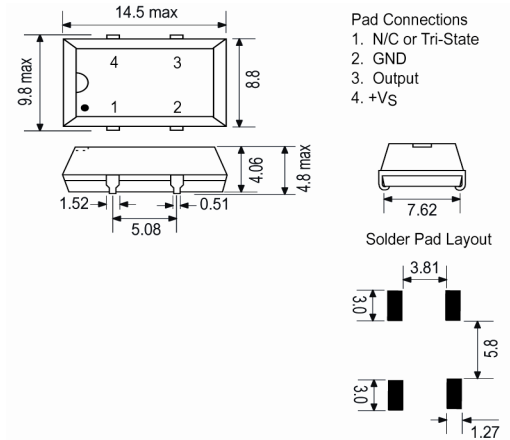
- Storage Temperature Range: -55 to 125°C

Ordering Information (*minimum required)

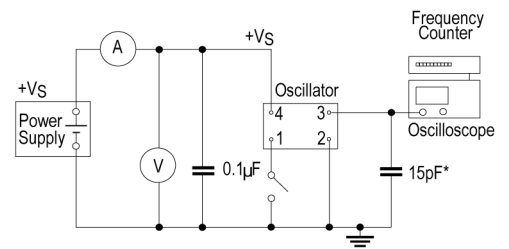
- Frequency*
Model*
Output Compatibility
Frequency Stability (over operating temperature range)*
Operating Temperature Range*
Supply Voltage
(*minimum required)
- Example
20.0MHz CFPP-57
CMOS ±50ppm -40 to 85C 5.0V



Outline (mm)



Test Circuit



* Inclusive of jigging and equipment capacitance

Sales Office Contact Details:

UK: +44 (0)1460 270200
Germany: +49 (0)7264 9145-0

France: Opening 6th March 2012
USA: +1 (0) 650 798 5047

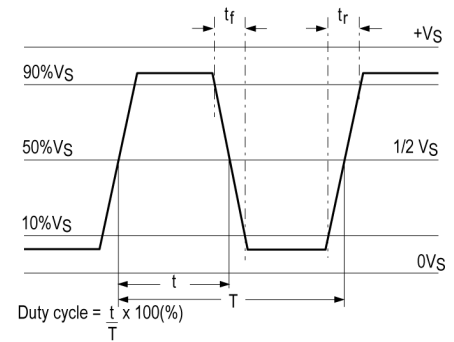
Email: info@iqdfrequencyproducts.com
Web: www.iqdfrequencyproducts.com



Packing Details

- Pack Style: **Bulk** Loose in bulk pack
Pack Size 1
- Pack Style: **Reel** Tape and reel in accordance with EIA-481-D
Pack Size 1,000
- Alternative packing options available

Output Waveform



Electrical Specification - maximum limiting values 5.0V ±0.5V

Frequency Range	Temp Range	Stability		Current Draw	Rise & Fall (10 to 90%)	Duty Cycle %
		Min	Max			
1.00 to <40.00MHz	0 to 70°C	±25ppm	±100ppm	45.0mA	4ns	45/55%
	-40 to 85°C	±25ppm	±100ppm	45.0mA	4ns	45/55%
40.00 to <66.00MHz	0 to 70°C	±25ppm	±100ppm	45.0mA	4ns	45/55%
	-40 to 85°C	±25ppm	±100ppm	45.0mA	4ns	45/55%
66.00 to <100.00MHz	0 to 70°C	±25ppm	±100ppm	45.0mA	4ns	40/60%
	-40 to 85°C	±25ppm	±100ppm	45.0mA	4ns	40/60%
100.00 to <133.00MHz	0 to 70°C	±25ppm	±100ppm	45.0mA	4ns	40/60%
	-40 to 85°C	±25ppm	±100ppm	45.0mA	4ns	40/60%
133.00 to <150.00MHz	0 to 70°C	±25ppm	±100ppm	60.0mA	4ns	40/60%
	-40 to 85°C	±25ppm	±100ppm	60.0mA	4ns	40/60%

This document was correct at the time of printing; please contact your local sales office for the latest version

Sales Office Contact Details:

UK: +44 (0)1460 270200
Germany: +49 (0)7264 9145-0

France: Opening 6th March 2012
USA: +1 (0) 650 798 5047

Email: info@iqdfrequencyproducts.com
Web: www.iqdfrequencyproducts.com