

# CFPP-700 FAST MAKE OSCILLATORS

ISSUE 5; 1 NOVEMBER 2010 - RoHS 2002/95/EC

## Description

- PLL based, one time only factory programmable for a fast lead time
- Temperature compensated to give very tight stability (TCXO)
- Crystal oscillator in a hermetically sealed ceramic package with a metal lid

## Frequency Range

- 1 to 200MHz

## Output Compatibility & Load

- Tri-state CMOS
- Drive capability 15pF max

## Supply Voltage

- 3.3V

## Standard Frequency Stability

- Over operating temperature range  $\pm 2.5$ ppm (inclusive of Frequency Tolerance)
- Supply voltage variation  $\pm 0.3$ ppm
- Load variation  $\pm 0.1$ ppm
- After soldering  $\pm 0.3$ ppm

## Operating Temperature Range

- -30 to 75°C

## Storage Temperature Range

- -55 to 125°C

## Tri-state Operation

- Logic '1' to pad 1 enables oscillator output
- Logic '0' to pad 1 disables oscillator output; when disabled the oscillator output goes to the high impedance state
- No connection to pad 1 enables the oscillator output

## Ageing

- $\pm 1$ ppm max in 1st year @25°C,  $V_S = 3.3$ V

## Packaging

- Loose in bulk pack, 1pc per bag
- Tape and reel in accordance with EIA-481-D, 1kpcs per reel (please see pages 372 & 373)

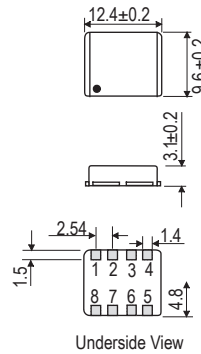
## Ordering Information (\*minimum required)

- Frequency\*
- Model\*
- Output Compatibility
- Frequency Stability (over operating temperature range)\*
- Operating Temperature Range\*
- Supply Voltage

## Example

- 50.00MHz CFPP-700  
CMOS  $\pm 2.5$ ppm -30 to 75C 3.3V

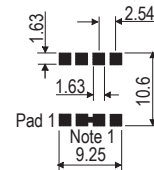
## Outline (mm)



## Pad Connections

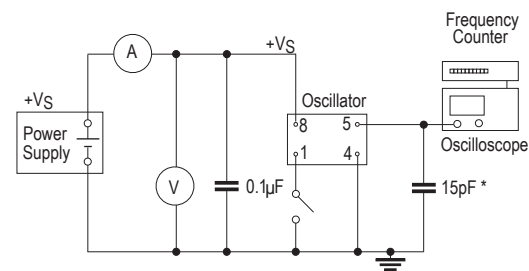
1. Tri-State
2. Connect to pad 3
3. Connect to pad 2
4. GND
5. Output
6. Factory use (make no connection)
7. Factory use (make no connection)
8. +VS

## Solder Pad Layout



Note 1. Connect pad 2 to pad 3

## Test Circuit



\* Inclusive of jigging and equipment capacitance



**Electrical Specifications - maximum limiting values**

Frequency Range	Frequency Stability	Supply Voltage	Supply Current	Duty Cycle	Model Number
1.0 to <100.0MHz	±2.5ppm	3.3V ±5%	40mA	45/55%	CFPP-700
100.0 to 200.0MHz				40/60%	
Note: For other frequency/specification combinations, please contact our sales offices					

