

ISSUE 13; July 2024



Description

- Standard 7 x 5mm, 2.5V surface mount oscillator in a ceramic package, with a hermetically sealed metal lid

Frequency Parameters

- Frequency 500.0kHz to 156.25MHz
- Frequency Stability $\pm 25.00\text{ppm}$ to $\pm 100.00\text{ppm}$

Electrical Parameters

- Supply Voltage 2.5V $\pm 5\%$

Operating Temperature Ranges

- 10 to 70°C
- 40 to 85°C

Output Details

- Output Compatibility CMOS
- Drive Capability 15pF max

Output Control

- Logic '1' ($>70\%$ VS) to pad 1 enables oscillator output
Logic '0' ($<30\%$ VS) to pad 1 disables oscillator output; the oscillator output goes to the high impedance state
No connection to pad 1 enables oscillator output
- Standby Current: 10 μ A max

Environmental Parameters

- Storage Temperature Range: -55 to 125°C
- Shock: MIL-STD-202, Method 213, Condition E
- Vibration: MIL-STD-883, Method 2007, Condition A

Manufacturing Details

- RoHS Terminations NiAu
- RoHS Reflow 260degC 10s

Ordering Information

- Frequency*
- Model*
- Output
- Frequency Stability*
- Operating Temperature Range*
- Supply Voltage
(*minimum required)
- Example
10.0MHz CFPS-32
CMOS $\pm 50\text{ppm}$ -10 to 70C 2.5V

Compliance

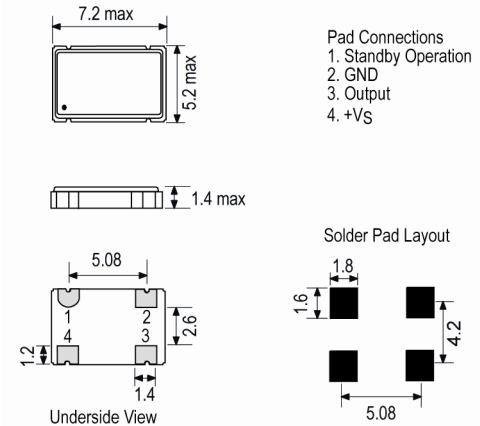
- RoHS Status (2015/863/EU) Compliant
- REACH Status Compliant
- MSL Rating (JDEC-STD-033): Not Applicable

Packaging Details

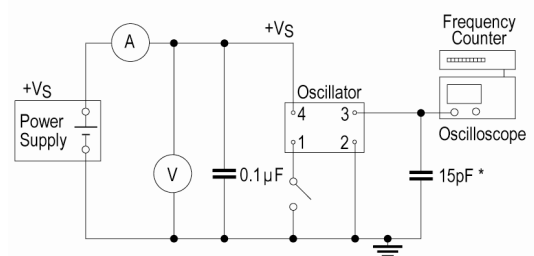
- Pack Style: Reel Tape & reel in accordance with EIA-481
Standard Pack Quantity: 1,000



Outline (mm)



Test Circuit



* Inclusive of jigging and equipment capacitance

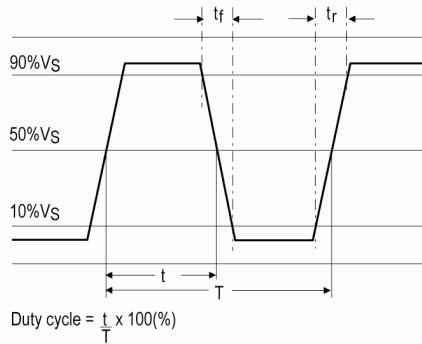
Sales Office Contact Details:

UK: +44 (0)1460 270200

Email: info@iqdfrequencyproducts.com

Web: www.iqdfrequencyproducts.com

Wave Form



Electrical Specification - maximum limiting values 2.5V ±5%

Frequency Min	Frequency Max	Temperature Range	Stability (Min)	Current Draw	Rise and Fall Time	Duty Cycle
		°C	ppm	mA	ns	%
500.0kHz	9.999999MHz	-10 to 70 -40 to 85	±25.0 ±25.0	6 6	5 5	40/60% 40/60%
10.0MHz	19.999999MHz	-10 to 70 -40 to 85	±25.0 ±25.0	8 8	5 5	40/60% 40/60%
20.0MHz	31.999999MHz	-10 to 70 -40 to 85	±25.0 ±25.0	8 8	5 5	40/60% 40/60%
32.0MHz	49.999999MHz	-10 to 70 -40 to 85	±25.0 ±25.0	20 20	5 5	40/60% 40/60%
50.0MHz	79.999999MHz	-10 to 70 -40 to 85	±25.0 ±25.0	20 20	4 4	40/60% 40/60%
80.0MHz	99.999999MHz	-10 to 70 -40 to 85	±25.0 ±25.0	25 25	3 3	40/60% 40/60%
100.0MHz	156.25MHz	-10 to 70 -40 to 85	±25.0 ±25.0	30 30	3 3	40/60% 40/60%

This document was correct at the time of printing; please contact your local sales office for the latest version.
[Click to view latest version on our website.](#)

Sales Office Contact Details:

UK: +44 (0)1460 270200

Email: info@iqdfrequencyproducts.com
 Web: www.iqdfrequencyproducts.com