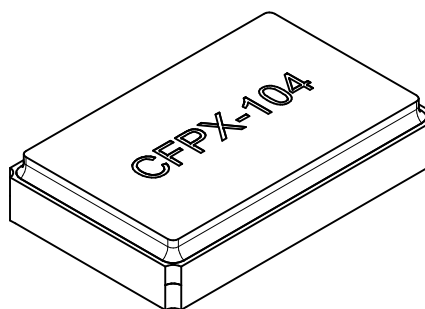
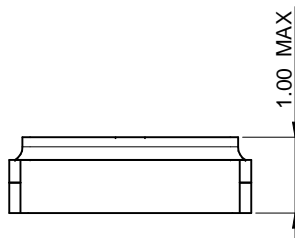
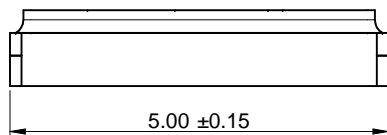


### Pin Connections

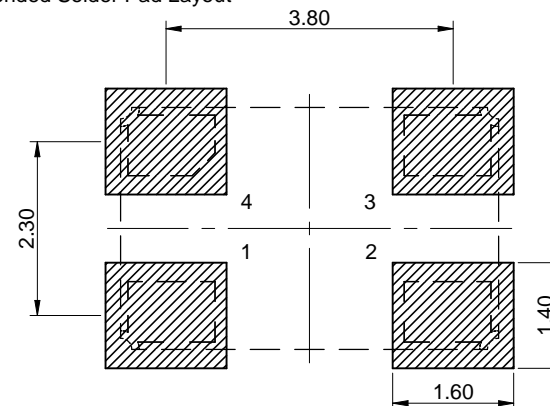
1. Crystal
2. GND & Lid
3. Crystal
4. GND & Lid



**NOTE:** The chamfer may appear on pad 1 or 4.  
This causes no change to the electrical performance of the device.

Scale - 10:1

### Recommended Solder Pad Layout



Scale - 10:1

				IQD Frequency Products Ltd	CREATED Applications	CHECKED QA	GENERAL TOLERANCE DIN ISO 2768-1m	PROJECTION METHOD		SCALE 10 : 1
				Station Road Crewkerne Somerset TA18 8AR	DESCRIPTION  CFPX-104 Quartz Crystal				TECHNICAL REFERENCE  ORDER CODE LFXTALxxxxxx	
A	Drawing Released	01/04/2020	KL	Tel. +44 (0)1460 270200	SIZE 5.0 x 3.2	Status Released	Date 20/09/2021	BUSINESS UNIT Applications Crewkerne		PAGE 1 / 1
B	Updated Drawing Tolerance	22/02/2021	CP							
C	Added lid to pinout	20/09/2021	CP							
REV.	FILE	DATE	BY	www.iqdfrequencyproducts.com						

